

Intructions and advices

Size choice *(with a 25" riser)*:

70": draw length of 29 " AMO and more

68": draw length of 28 " AMO

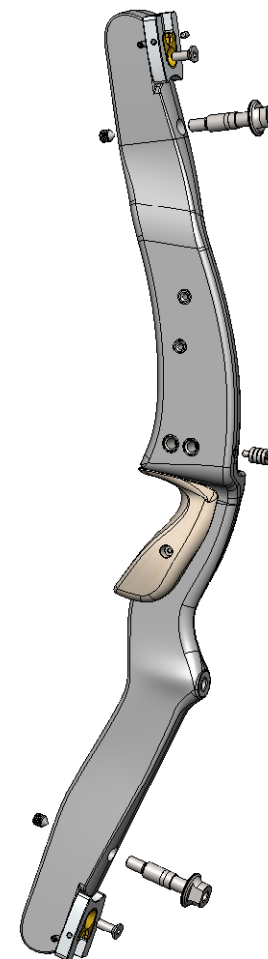
66": draw length of 27 " AMO and less

(The AMO draw length is the distance in inches between the nock and the pressure button + 1.75 ")

Our limbs are really smooth at the end of the traction, do not choose systematically a higher size, you would loose speed.

Weight choice:

Each pair of limbs is weighed with the median adjustment of the tiller screws. The corresponding weight is written on the limbs.



Upro, UproLite riser
User guide



We congratulate you to have chosen Uukha products, and we hope that they will bring you as much pleasure as we took to develop them.

Safety:

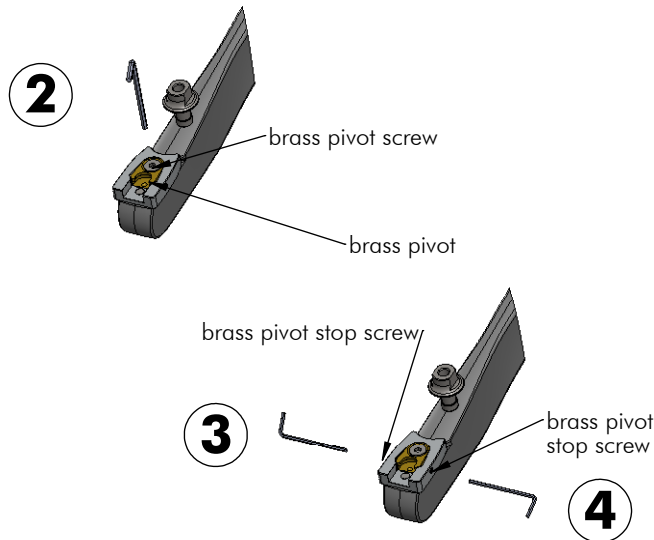
Bow is a weapon, you should shoot in a range, and respect security instructions in use for this activity.

Lateral adjustment:

Once the bow is strung, if you look at the bow from rear side, the string must be aligned with the middle of limbs and the center of tiller stop screws. If it's not the case, you should adjust the riser alignment.

- 1 unstring the bow
- 2 loosen (1/2 turn) the screw blocking the brass pivot .
- 3 loosen (1/2 turn) the brass pivot stop screw on one side
- 4 tighten (1/2 turn) the brass pivot stop screw on the opposite side
- 5 string the bow and check the alignment
- 6 repeat steps 1 to 5 until you reach a correct alignment (with 1/4 turn for final adjustment)
- 7 Don't forget to tighten the brass pivot screw before shooting

NB1: to tighten screws, always use the short side of the allen key, as shown on pictures, in order to limit the applied torque .
 NB2: the brass pivot stop screws are stopped themselves by the mean of a nylon rod, to avoid they get loose due to vibrations. They may seem a bit hard to tighten: it's not a reason to tighten too much, they just act as a stop. If you tighten the stop screws too much, it will be hard to mount the limbs in the pockets.



Weight adjustment (tiller screws)

Tiller screws allow to modify the poundage, by tilting limbs forward or backward. To facilitate adjustments, grooves are engraved on the screws. Pictures show the 3 positions accordingly to groove alignment with the edge of the riser.

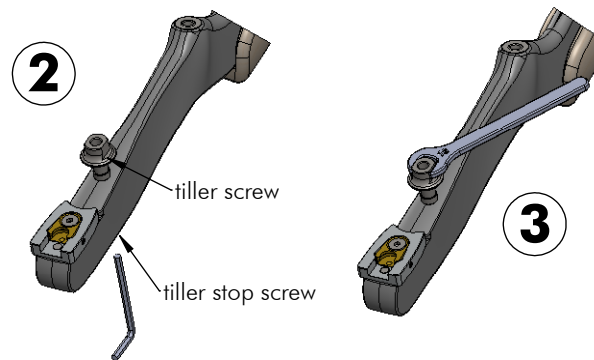
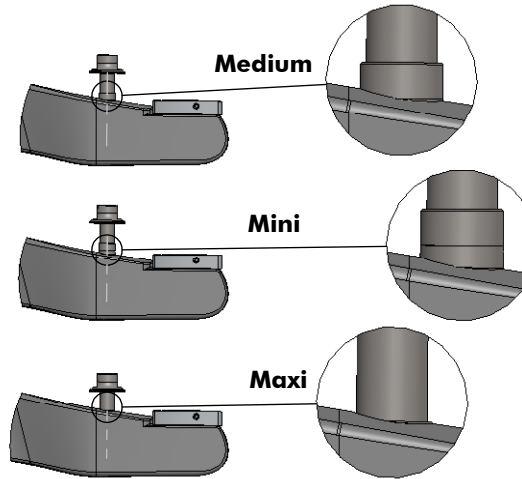
- medium: medium setting gives the weight marked on the limbs at 28"AMO drawlength (+ - Lbs).

- mini: allows to reduce weight by 5 %.
 warning: you should not see more than half the groove, otherwise, the screw would not be engaged on enough threads.

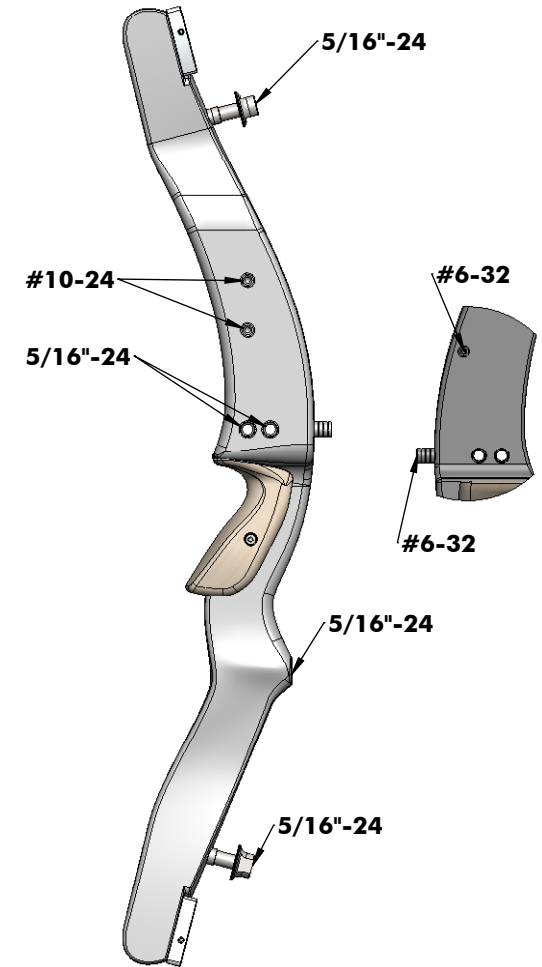
- maxi: allows to increase weight up to 9 %

Adjustment:

- 1 unstring the bow
- 2 loosen the stop screws
- 3 adjust height with the 13mm wrench
- 4 don't forget to tighten stop screws before shooting



Threads for accessories mounting



Maintenance:

UUKHA products are covered with a varnish , use simply water and gentle soap to clean them. In case of impact having deteriorated the varnish, be aware that the composite structure is perfectly waterproof and will not absorb water. To preserve the aspect of your product, you can make a final improvement of varnish.

Guarantee:

UUKHA risers are guaranteed 2 years against any manufacturing defect. In spite of our controls, if you detect a defect, please contact your dealer.