

Location of screw D in relationship to the cock feather in jig. (3 fletch and 4 fletch)

### To set the jig for 3 or 4 fletch

For 3 fletches, screw in screw A and screw out screw B till you get a positive 3 locations when turning barrel marked E.

**!!Warning!!** Do not screw in screw A too far or barrel E will lock up. When this happens, do not try to force it. Slacken off screw A until the barrel rotates. When screwing out screw B, do not screw out so far as to disengage the screw from the jig, as the spring and locating ball will fall out and get lost. Hexagon head screw C retains barrel assembly in the jig; do not slacken or remove.

To set for 4 fletches all you need to do is screw in screw B and screw out screw A till the barrel locates in 4 positions. Observe warning as before.

The jig comes set to the standard recurve setting of cock fletch out. To change the orientation of the cock fletch, slacken off screw D till you can rotate the serrated barrel E inside plain barrel F. Set to desired position (usually about 90° clockwise for cock fletch up) and tighten. This can easily be set if you have an arrow in the jig that is already set for cock fletch up.

### Setting the fletch angle

To set the angle that the fletchings will be glued on to the shaft, you will need to slacken off the 2 screws on the magnetic location bar G and adjust to the required position before re-tightening the screws.

If you already have a fletched arrow and you want to set the jig to match, just fit the arrow into the jig making sure that it is fully seated on the nock locator inside barrel F.

Fit the clamp to the upright fletch making sure it is fully seated onto shaft. Slacken the two screws with the allen key supplied enough to allow the magnetic location bar to move and settle in the right position, then re-tighten the 2 screws.

Now you are ready to start fletching.

### A quick guide to fletching:

If you have set the jig to match an existing arrow you will need to mark or make note of where the back of the fletch sits.

With the clamp on the cock fletch and sitting down against the location bar as shown in photo 3 mark the clamp with a pen or marker to show where the back of the fletch sits in the clamp.

Clean the shaft with a cloth dipped in warm soapy water and dry thoroughly. Set the jig to the cock fletch, (i.e. with screw D in the position shown in photo 1), fit the cock fletch into the clamp, aligning the back of fletch to your mark. \*Clean base of fletch, and spread a thin bead of glue evenly along the whole length of fletch foot. Locate the back of the clamp against the location bar and press firmly down onto shaft. It is best to hold the arrow firmly into the jig to prevent the shaft flexing when pushing clamp down. Allow glue to dry, remove clamp, rotate barrel to next position and repeat above with your hen fletches. The screw on the clamp can be used to slacken it before removal, though it should not be necessary if the fletchings are set.

### Finishing your arrows

When all 3 fletches are on and dry remove the arrow from the jig and Top and Tail the fletches.

Topping and Tailing means to drop a (small!) blob of glue on the front and rear of the fletch.

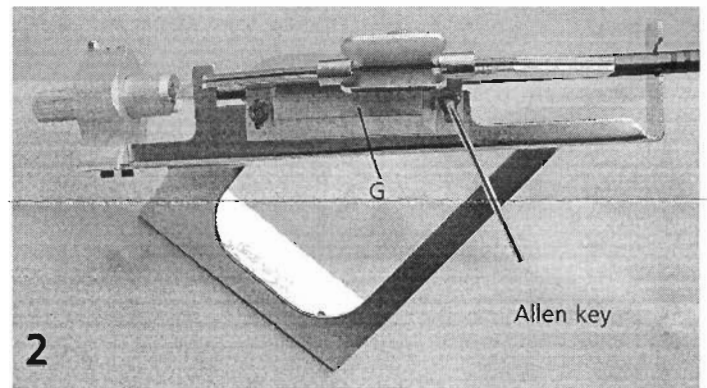
You can now call yourself a Fletcher and with practice and patience you will have professional looking arrows every time.

\*Please note Plastifletch EP and Easton Diamond vanes have an activator coating on the fletch foot and should not be cleaned before applying the recommended Fast Set glue. If you are using a different glue, they should be cleaned as normal. Do not use oil based or solvent cleaners. (We use surgical spirit).

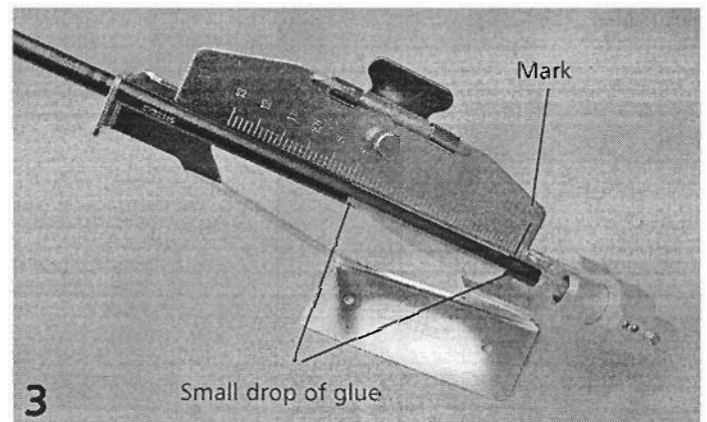
## Cartel fletching jig

The Cartel Jig can be adjusted for standard 3 fletch or 4 fletch. You can also set the arrow nock locator from the standard setting of cock feather *out* for recurve bows to cock feather *up* for compound bows with arrow launchers fitted.

- 1.A. 3 fletch selection screw
- 1.B. 4 fletch selection screw
- 1.C. Barrel retaining screw
- 1.D. Cock feather alignment screw
- 1.E. Serrated fletch locator barrel
- 1.F. Plain barrel
- 2.G. Magnetic location bar



Allen key located in magnetic location bar screw



Marking the clamp for fletch alignment